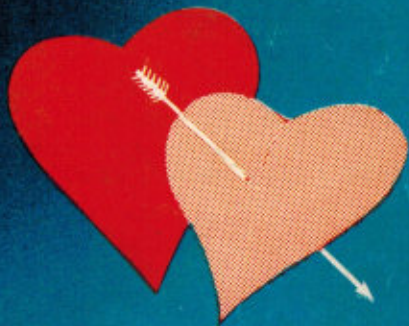


# Muccio's Nurseries

GROWERS OF RARE CAMELLIAS SINCE 1935



*Camellias for 1959*

SWEETHEART  
PLANT PAT. NO. 1562  
SEE PAGE 5



# FINEST OF RECENT INTRODUCTIONS



GUILIO NUCCIO

**DESTINY**—Having all the fine qualities of its parent, this sport of Lady Clare will soon become a favorite. Blush pink variegated deep pink. E-M. 12-18" \$7.50\*

**EDELWEISS**—Large white peony to semi-double. Long blooming season. Vigorous, upright growth. Outstanding. E-M. (Seedling developed by Mr. C. Breschini.) 12-18" \$5.00\*

**EMILY WILSON**—A beautiful pale pink, large, semi-double to incomplete double. Vigorous, upright growth. M. 12-18" \$7.50\*

**GEN. LECLERC**—Large semi-double to peony form with irregular petals. Dark red. Medium, upright, compact growth. M. 12-18" \$7.50\*

**GUILIO NUCCIO** (Margaret Hertrich Award 1956)—A 5 to 6 inch semi-double of unusual beauty. Coral rose, with 12 to 15 wavy petals and 3 to 5 large rabbit ears. Heavy texture. Foliage large, dark green with vigorous, bushy growth. E-M. 12-18" \$7.50\*; 18-24" \$10.00\*; 24-30" \$12.50\*; 30-36" \$15.00\*

**HAZEL HERRIN**—Very large semi-double with loose, wide petals and large petaloids. Old rose. Medium, open growth. M. 12-18" \$5.00\*

**JACK McCASKILL** (Wm. Hertrich Award 1953-54).—Unusual colored sport of Te Deum. Antique rose-pink shaded burgundy and edged white. L. 12-18" \$7.50\*

**JUDGE SOLOMON** (N #408)—Seedling of Chandleri. Large, deep pink, full peony. Excellent texture. Bushy, upright growth. M-L. 12-18" \$7.50\*

**KRAMER'S SUPREME**—(Pl. Pat. No. 1583.) An outstanding new camellia. Very large, rich red, full peony. Vigorous upright growth. M-L. 12-18" \$5.00; 18-24" \$7.50; 24-30" \$10.00

**LOOK AWAY**—Sport of Herme. Deep rose-pink in throat with wide border of white. Excellent. 12-18" \$6.00\*

**MERCURY**—Deep rose-pink to scarlet. Large flat, semi-double with upright center petals. Medium, compact growth. M. 12-18" \$7.50\*

**MIRIAM STEVENSON**—Large semi-double to peony form with petaloids and stamens intermixed. Medium, upright growth. M. 12-18" \$6.00\*

**MISS FRANKIE** (N #515)—A large, semi-double, clear salmon-pink with large petals and golden yellow stamens. Outstanding. Vigorous, upright growth. M. 12-18" \$5.00; 24-30" \$10.00

**MRS. D. W. DAVIS**—(Illges Medal Award 1955.) Very large semi-double, blush pink. Vigorous upright growth with strong, dark green foliage. M. 12-18" \$10.00\*

**SHOWA-SUPREME**—This seedling of Showa-no-Sakae has proven superior to its parent. Feathery, full peony, deep clear pink. Vigorous, spreading growth for ground cover, and may be easily handled for upright growth. Foliage much heavier than Showa-no-Sakae. 12-18" \$3.00

**STELLA SEWELL**—Creamy white, very large semi-double to peony form. Medium, compact growth. M. 12-18" \$7.50\*

**TOMORROW**—A large, brilliant red, irregular semi-double with large petaloids. Vigorous, upright growth. E-M. 12-18" \$7.50\*

**VIRGINIA ROBINSON** (N #5461)—Beautiful large, semi-double, clear orchid-pink. Large foliage, vigorous, upright, compact growth. M-L. 12-18" \$3.50; 18-24" \$5.00

**AVA MARIA**—A very beautiful silvery pink formal double that blooms from Oct. through March. Medium large. Upright, compact. E-M. (Seedling developed by Mr. C. Breschini.) 12-18" \$5.00\*

**BARBARA WOODROOF**—Sport of Chandleri. Light orchid pink outer guard petals with cream white center petaloids. Outstanding. M. 12-18" \$7.50\*.

**BILLIE McCASKILL**—(Margarete Hertrich Award 1957.) Medium size, deeply fimbriated, semi-double. Beautifully shaded soft pink. Profuse bloomer. Compact, upright growth. M. 12-18" \$7.50\*; 18-24" \$10.00\*

**BUDDHA**—(Pl. Pat. No. 1215.) Winner of the 1957 All America Camellia Selections. A new reticulata that soon will become a favorite. Very large, orchid pink, semi-double with beautiful rabbit ears. Extremely vigorous, upright, open growth. Outstanding in warm sections. Jan.-Mar. 12-18" \$7.50\*

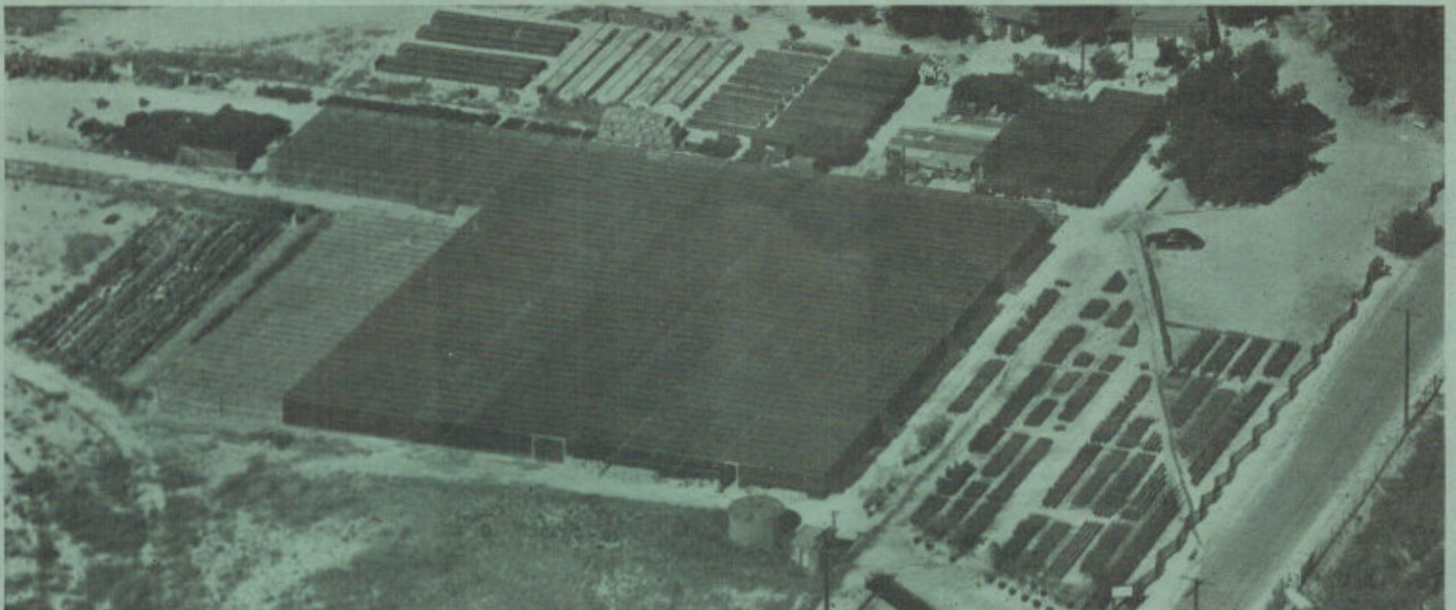
**BRYAN WRIGHT**—Light pink, medium, semi-double to peony form, with loose petals interspersed with stamens. Medium, compact, upright growth. M. 12-18" \$5.00\*; 18-24" \$7.50\*

**CARDINAL**—(Seedling by Mr. Carter.) A 4-5" rich, dark red. Full peony of outstanding texture. Vigorous, upright growth with handsome, dark green foliage. 12-18" \$6.00\*; 18-24" \$7.50\*; 24-30" \$10.00\*

**CINDERELLA** (Plant Patent No. 1281)—Winner of the 1956 All-America Camellia Selections. Beautiful pale pink, bordered white sport of Fred Sander. Fimbriated edges. 12-18" \$5.00\*; 18-24" \$7.50\*

**CLARISE CARLTON**—Beautiful large, irregular, semi-double. Brilliant coral-red. Limited. M. 12-18" \$7.50\*

**CORAL PINK LOTUS**—A very large, semi-double coral-pink with deeper pink veins. Vigorous, open, upright growth. M. 12-18" \$6.00\*; 18-24" \$7.50\*; 24-30" \$12.50\*



AERIAL VIEW OF NUCCIO'S NURSERIES

## WELCOME VISITORS!

Most of our customers come to us through the United States mail, but we enjoy having visitors stop in to see us, and we cordially invite you to do so whenever you can. We are open daily **except Wednesday**, and business hours are from 8:00 to 5:00. During the period from May 1 through October 20 we are also closed on Sundays.

## TERMS OF SALE

Please send your remittance with your order. California customers add 4% sales tax to the total. Prices in this catalog are subject to change without notice, and are all F.O.B. Altadena, California. Please specify the way you wish to have us make shipment (parcel post, express, motor freight, railroad freight or air freight). When no instructions are given we will ship via Railway Express. We make no crating charge on orders over \$20.00, but **if your order amounts to less than \$20.00, please add \$1.00 for the first plant and 25c for each additional plant ordered** in order to cover crating costs.

## GUARANTEE

We guarantee all plants to be true to name, to be well grown, and properly packed for shipment. Shortages, damages or losses should be reported to the transportation agency immediately on arrival, and if you will notify us, we will give you all the assistance we can. At no time will we be responsible for more than the purchase price.

## PLEASE READ BEFORE ORDERING

All of our Camellias are container grown (1-gal., 3-gal., 5-gal. and 6-gal.) and will be shipped in their containers. Handled this way Camellias can be shipped and planted every month of the year.

Notice to residents of the states of Alabama, Florida, Georgia, Louisiana, Mississippi, North Carolina, South Carolina and Tennessee. All shipments of Camellias into these states will be bare-rooted, reballed in peat moss, burlapped and wrapped in waterproof paper. We are experienced in shipping bare-rooted Camellias and have found the above method so successful that we are giving the same guarantee we give our container grown Camellias. We have successfully shipped bare-root Camellias all months of the year, but for best results we advise shipment from mid-September through May.

## NEW VARIETIES

Our breeding and testing program evaluates each year literally hundreds of new varieties of camellias, both of our own and other breeders' origin. To our already very large list of varieties we have added many more this year, dropping some which have become displaced by superior new strains.

# How to Grow Fine Camellias

## Where and How to Plant

Even though Camellias can and are being successfully grown in full sun, the best exposure is filtered shade (trees, lath, etc.), morning, or afternoon sun. If planting a Camellia in full sun, it should be done in the winter months in order to allow the plant to become acclimated before summer heat.

Dig a hole at least twice as deep and twice as big around as the size of the container or ball of the plant. Add 1/2 peat moss or leaf mold to soil taken from hole and mix thoroughly. If soil is heavy (clay or adobe) use at least 50% peat moss or leaf mold. Fill the hole with sufficient amount of mixed soil so that after firming, the top of the plant ball will set at least one inch above the surrounding area. **NEVER PLANT TOO DEEP.** After setting plant in hole, fill with the mixed soil and pack firmly. Make a basin around the plant and give it a thorough watering to settle soil. Place about one inch of peat moss in basin for mulch.

## Watering

Do not allow plants to become dry, and more important, never keep soil soggy wet. Either condition can cause buds to drop or loss of plant. Always bear in mind that a Camellia likes to be kept reasonably moist, but also requires good drainage.

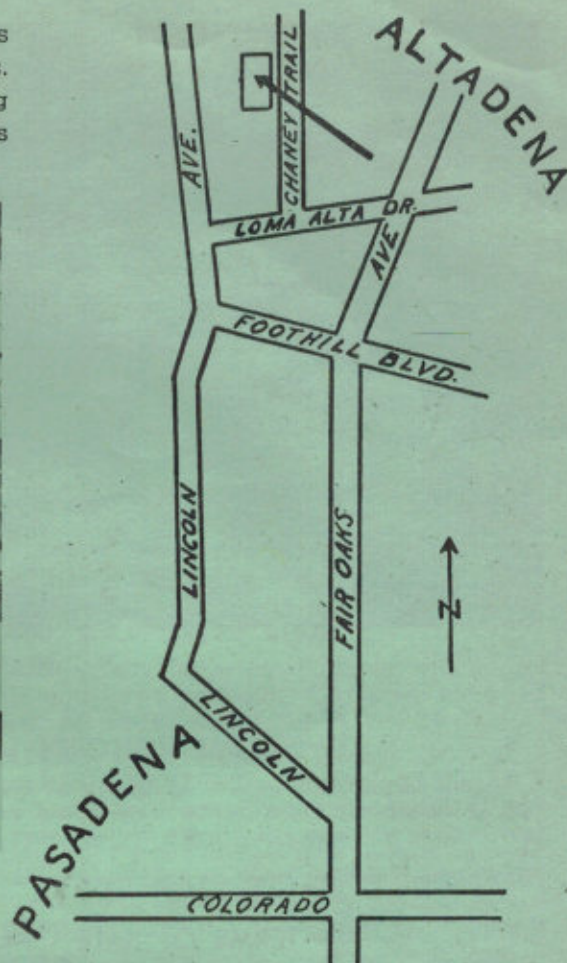
## Fertilizing

Camellias should be fertilized during the summer growing months, starting as early as March and not later than August. Three feedings in this period are sufficient, i.e., April, June and August. Space feedings at least 30 days apart. Any of the better known acid fertilizers may be used, preferably cottonseed meal. For amount follow directions on package. **NEVER OVER-FERTILIZE.**

**WE ARE PROUD** of our Shipping Department and we have countless complimentary letters from out-of-State purchasers of our Camellias. All stock is expertly and efficiently crated and packed in strong light-weight crates and tamper-proof cartons. Every order, regardless of size, is fitted into custom-built crates.



**IN THE PAST** ten years we have shipped Camellias throughout the United States and many foreign countries with the utmost success, and feel confident that with our experience our customers are receiving the finest quality plants as a result of the best packing and crating possible.



### WELCOME, FRIENDS!

The above map will help you to drive straight to our nursery when you're in town. We very much like to meet our friends from all over camellia-land, and we'll be most happy and proud to show you our nursery. Business hours are from 8:00 to 5:00 every day except **Wednesday**. From **May 1 to October 20** we are also closed on Sundays.

## SPECIAL BONUS OFFER

When our customers send us a nice order we like to show our appreciation by shipping extra camellias. But so many times we are uncertain what to send because the variety we select may be one already a part of your collection. So we are making this special bonus offer in order to give you an opportunity to select the extra plants yourself. There are no restrictions on varieties—you may choose any kind in this catalog according to the following schedule:

If your order amounts to **\$20.00** or more, select any \$2.50 camellia free of additional charge.

If your order amounts to **\$40.00** or more, select any camellias totaling \$5.00 in value.

If your order amounts to **\$60.00** or more, select any camellias totaling \$7.50 in value.

If your order amounts to **\$80.00** or more, select any camellias totaling \$10.00 in value.

Larger orders earn bonus plants according to the same ratio

# FINEST NEW VARIETIES FOR 1959



MAY INGRAM



ANGEL

**AARON'S RUBY**—A large to very large metallic red, semi-double to anemone form with petals intermixed with trumpet-shaped petaloids surrounding mass of golden stamens. Vigorous, slender, upright growth. E-L. 12-18" \$10.00\*

**ANGEL**—A very large white semi-double with fluted petals and rabbit ears. Compact, upright growth. M. (Seedling developed by Councilman Camellia Acres.) 12-18" \$10.00\*; 18-24" \$12.50\*; 30-36" \$25.00\*

**BETTY SHEFFIELD BLUSH**—Blush pink bordered white sport of Betty Sheffield. Medium, compact growth. Outstanding. M. 12-18" \$7.50\*

**CONQUISTADOR** (N #5527)—A beautiful large coral rose, semi-double with fluted petals intermixed with golden stamens. Vigorous, upright, compact growth. M-L. 12-18" \$7.50\*

**DORIS FREEMAN**—Large semi-double to peony form. Pink marbled and blotched white. Compact, upright growth. M. 12-18" \$10.00\*

**GUILIO NUCCIO VAR.**—A beautiful blotched white variegated form of Guilio Nuccio. 12-18" \$10.00\*

**LAURA WALKER**—Bright red large semi-double to loose anemone form. Vigorous, compact, upright growth. E-M. 12-18" \$10.00\*.

**LUCY HESTER**—A fine new seedling of Lotus developed by Mr. and Mrs. K. O. Hester. Large to very large silvery pink, semi-double with handsome foliage. Strong, upright growth. 12-18" \$7.50\*; 24-30" \$15.00\*

**MAY INGRAM** (N #526)—Outstanding, early blooming, orchid pink formal double. Always in full bloom for the Christmas season. Excellent corsage flower. Vigorous, upright growth. E-L. 12-18" \$6.00\*

**ONETIA HOLLAND**—Large to very large white semi-double to peony with tiers of outer petals surrounding 3" high petaloids interspersed with golden stamens. Vigorous, upright growth. M. 12-18" \$15.00\*

**PRELUDE**—Rich turkey-red. Large, semi-double to anemone form with twisted inner petals. Vigorous, upright growth. E-M. 12-18" \$7.50\*

**SULTANA**—Early blooming sport of Mathotiana. Scarlet, semi-double to peony form. E-M. 12-18" \$7.50\*

**SWEETHEART** (Pl. Pat. No. 1562.)—The All-America Camellia Selections Winner for 1959. A beautiful soft apricot-pink formal double, occasionally marbled white sport of Casablanca. Fine corsage flower. Outstanding on West Coast and areas where Bleichroeder and Casablanca perform. Vigorous, bushy, upright growth. E-M. 12-18" \$5.00\* 18-24" \$7.50\*; 24-30" \$10.00\*; 30-36" \$15.00\*

**SALLY HARRELL**—Large white, full peony form of the Debutante type. Compact, upright growth. E-M. 12-18" \$7.50\*

**TINKER BELL** (N #546)—A small, 2½ to 3" anemone type flower. White with pink and rose-red stripes. Profuse and long blooming. Nov. through March. Vigorous, upright growth. E-M. 12-18" \$5.00\*

**WILLIAMSHI SEMI-DOUBLE**—A beautiful new hybrid camellia. Pale pink ruffled petaled semi-double. Vigorous, upright growth. M-L. 18-24" \$10.00\*

**WINTER MORN**—A very large white semi-double to anemone form of outstanding texture. Extremely hardy in cold sections. Handsome, large foliage. Vigorous, upright growth. M. 12-18" \$7.50\*; 18-24" \$10.00\*

# NUCCIO'S *Supreme Quality* CAMELLIAS

**ADOLPHE AUDUSSON VAR** (Special)—Heavily mottled white form of Adolphe Audusson. M. 12-18" \$4.00\*; 18-24" \$5.00\*; 24-30" \$7.50; 30-36" \$10.00\*

**AN-FLO-LEE**—Very large, dark red peony to anemone form. Vigorous, upright growth. M. 12-18" \$6.00\*

**ANN MILLER**—Large, semi-double to double, pale pink. Vigorous, compact growth. M-L. 12-18" \$5.00\*

**ARRABELLA**—Orange-red. Resembles Reticulata in form. Large, semi-double. Upright, compact growth. M. 12-18" \$2.50; 18-24" \$3.50; 24-30" \$7.50; 30-36" \$10.00

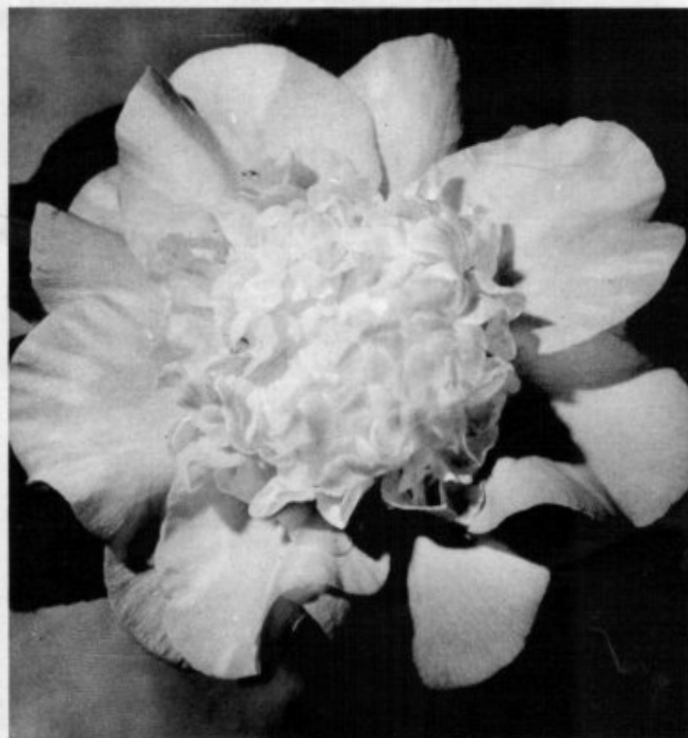
**BEAU HARP**—Very large, irregular semi-double, brilliant rose-red. Vigorous, upright growth. E-M. 12-18" \$4.00\*

**BERENICE BODDY** (U.S. Pat. No. 605)—Light pink with deeper pink under petals, shading to a blush center. Medium-large, semi-double. Vigorous, loose growth. M. 12-18" \$2.50

**BETTY McCASKILL** (Maliflora)—Small semi-double to full double pale pink, margined rose-pink. Vigorous, slender, upright growth with small foliage. M-L. 12-18" \$5.00\*

**BETTY SHEFFIELD**—Large white, variegated red and pink, semi-double to loose peony form. Medium, compact growth. M. 12-18" \$6.00\*

**BIG BEAUTY**—White, blotched and spotted with pink. Large, semi-double to loose peony form. Vigorous, bushy growth. M-L. 12-18" \$2.50; 18-24" \$3.50; 24-30" \$7.50; 30-36" \$10.00



CHANDLERI ELEGANS, See Page 18

**BLUSH PLENA**—Beautiful new sport of Alba Plena. Flowers are blush-pink when first open, fading to white after several days. Foliage, growing habit and blooming season same as Alba Plena. 12-18" \$6.00\*

**CAROLYN TUTTLE**—New. Rose-opal, full peony flower similar to Debutante in form, but deeper in color. Sturdy, long-lasting blooms ranging in size from 3½ to 4 inches and larger. Glossy, crinkled, pointed foliage; sturdy, compact, upright plants. M. 12-18" \$2.50; 24-30" \$7.50; 30-36" \$10.00

**CATHERINE McCOWN**—Light pink. Sport of Eleanor McCown. Loose, upright growth. M. 12-18" \$5.00\*; 18-24" \$6.50\*

**CHARLOTTE BRADFORD**—A beautiful silvery pink, variegated white sport of Thelma Dale. M. 12-18" \$5.00\*

**CHOYO-NO-NISHIKI**—Large, semi-double variegated. Vividly striped rose-red on pink background. Slow, compact growth. E-M. 12-18" \$5.00\*; 18-24" \$6.50\*

**CLARA GREEN**—A very lovely, large anemone form. Brilliant rose-pink. Upright, compact growth. M. 12-18" \$2.50; 18-24" \$3.50; 24-30" \$7.50\*; 30-36" \$10.00\*

**C. M. WILSON**—Pale pink sport of Chandleri Elegans. Outstanding. Medium spreading growth. E-M. 12-18" \$2.50; 18-24" \$3.50; 24-30" \$7.50; 30-36" \$10.00

**COLLETTII** (Collettii Maculata)—Brilliant dark red, blotched with white. Medium, peony form. Slow, bushy growth. E-M. 12-18" \$4.00; 18-24" \$5.00

**CONRAD HILTON**—Another wonderful addition to the already famous "Daik" family is this new egg shell white sport of High Hat. Extremely early. Slow, compact growth. E-L. 12-18" \$5.00; 18-24" \$7.50; 24-30" \$10.00\*; 30-36" \$12.50\*

**CORONATION**—White. Very large semi-double with beautiful crown of stamens and petaloids. Vigorous, open, spreading growth. M. 12-18" \$7.50\*

**DAINTY**—Blush-white, striped with pink. Heavily fringed petals. Semi-double. Sport of Tricolor Sieboldi. Upright, compact. M-L. 12-18" \$4.00\*

**DAITARIN**—Light rose pink. Very large single with mass of blush-white petaloids in center. Vigorous, upright growth. E-M. 12-18" \$2.50; 18-24" \$3.50; 24-30" \$7.50; 30-36" \$10.00

**DAVE STROTHER**—Beautiful, large blush pink, loose anemone to peony form. Vigorous, upright growth. M-L. 12-18" \$5.00\*; 18-24" \$6.50\*

**DESSA THOMPSON**—New. Medium to large, white, full peony form, extremely early. Compact, upright growth. E-L. 12-18" \$5.00\*; 18-24" \$6.50\*

**DONATION**—The finest of the Saluenensis x Japonica hybrids. Deep pink, large semi-double. Prolific bloomer. Medium, upright growth. M. 12-18" \$5.00\*; 18-24" \$7.50\*

**DONCKELARI**—Same as Donckelari (Southern) with the exception that our parent plant blooms heavily marbled white. M. 12-18" \$2.50; 18-24" \$3.50; 24-30" \$7.50

**DR. JOHN D. BELL**—Dark red, heavily variegated white form of Beau Harp. Vigorous. Upright growth. E-M. 12-18" \$5.00\*

**DR. TINSLEY**—New. Large, flesh pink, semi-double to peony. Outstanding. Upright, compact growth. M. 12-18" \$5.00\*

**DRAMA GIRL**—Its very large blossoms, 5½-6½", are large petaled, semi-double, deep salmon rose pink with prominent stamens. Vigorous, upright open growth, with extremely large, dark green foliage. Blooming season from December through April. 12-18" \$6.00\*; 18-24" \$7.50\*

**ECLATANTE**—Deep pink, large, semi-double. Vigorous, upright, compact growth. M. 12-18" \$6.00\*

**EDITH LINTON**—Beautiful pink, shading to silvery pink, sport of Jean Lyne. Large, semi-double to peony form. Medium, compact growth. M. 12-18" \$6.00\*; 18-24" \$7.50\*

**EDWIN FOLK**—Bright red. Very large, loose semi-double. Medium, upright growth. M-L. 12-18" \$2.50; 18-24" \$3.50; 24-30" \$7.50; 30-36" \$10.00

**ELEANOR HAGOOD**—Pale pink. Medium, formal very double. Vigorous, upright, bushy growth. L. 12-18" \$2.50; 18-24" \$3.50; 24-30" \$7.50; 30-36" \$10.00

**ELIZABETH LE BEY**—This outstanding new camellia is a must in every collection. The rich pink blossoms are very large, hemispherical, semi-double to loose peony form. Vigorous, pendulous growth. 12-18" \$6.00\*; 18-24" \$7.50\*

**EMMETT BARNES**—Finest of the whites. Very large semi-double to loose peony form. Vigorous, compact growth with large, dark green foliage. E. 12-18" \$6.00\*; 18-24" \$7.50\*; 24-30" \$10.00\*

**EMMETT PFINGSTL**—Beautiful red and white variegated form of Joseph Pfingstl. An excellent camellia. Vigorous, upright growth. E-M. 12-18" \$3.50; 18-24" \$5.00.

**ETHEL DAVIS**—Large, loose peony form. Beautiful, clear pink. Vigorous, upright growth. Outstanding. M. 12-18" \$5.00\*

**EUGENE LIZZIE (Lady Jane Gray)**—Rose-pink, marbled with white. Large, semi-double to peony form. Slow, compact growth. M-L. 12-18" \$2.50; 18-24" \$3.50; 24-30" \$7.50\*

**FLAME VAR.**—Flame-red, mottled with white. Variegated form of Flame. 12-18" \$4.00\*; 18-24" \$5.00\*

**FLAMINGO**—Beautiful, large, light pink. Single to semi-double. Vigorous, upright growth. M. 12-18" \$4.00\*; 18-24" \$5.00\*

**FLOWERWOOD (U.S. Pat. No. 1074)**—Flower form and color identical to Mathotiana but all petals are sharply fimbriated. Outstanding. Vigorous, bushy growth. M-L. 12-18" \$2.50; 18-24" \$3.50; 24-30" \$7.50\*; 30-36" \$10.00\*

**FRANCES McLANAHAN**—Soft pink sport of Lady Vansittart with lighter pink toward center of petals. Vigorous, upright, compact. Excellent. M. 12-18" \$6.00\*; 18-24" \$7.50\*; 24-30" \$10.00\*

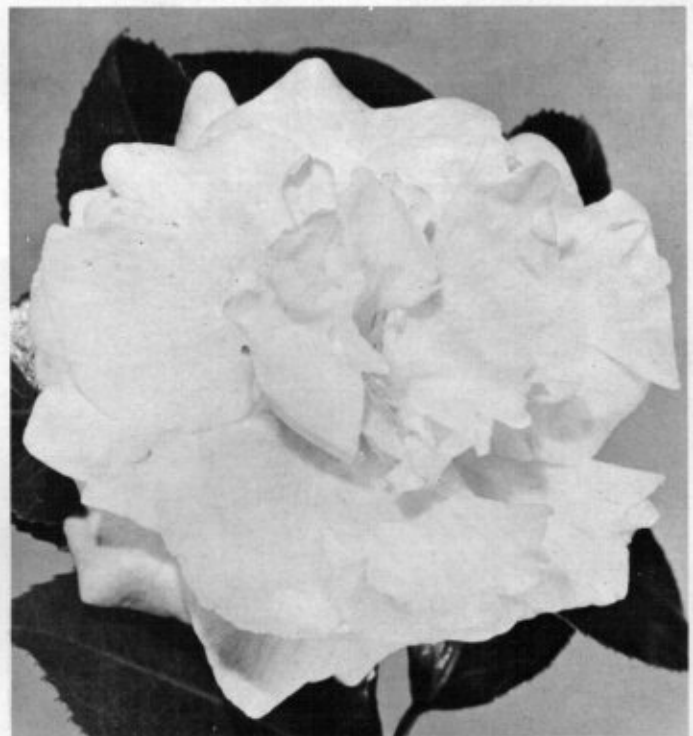
**FRANK GIBSON**—A large anemone form, consisting of a single row of white petals and a center of numerous golden petaloids and stamens. Medium, bushy growth. E-M. 12-18" \$4.00\*; 18-24" \$5.00\*; 24-30" \$7.50\*; 30-36" \$10.00\*

**FRENCH IMPERATOR**—Very large full peony form. Extremely dark red. Medium, upright, open growth. M. 12-18" \$4.00\*

**GLEN 40**—Deep orange-red. Large, full formal double. Slow, compact growth. M-L. 12-18" \$2.50; 18-24" \$3.50; 24-30" \$7.50; 30-36" \$10.00

**GLEN 40 VAR.**—Deep orange-red, mottled with white. Slow, compact growth. M-L. 12-18" \$4.00\*

**GRACE BUNTON**—Deep rose pink edge to white at center. Large semi-double to peony form. Bushy compact growth. M. 12-18" \$4.00\*; 18-24" \$5.00\*



HIGH HAT, See page 18



C. JAPONICA CORAL PINK LOTUS, See page 2



C. JAPONICA BILLIE McCASKILL, See page 2

**HANA FUKI**—Light pink. Very large cup shaped, semi-double. Medium, compact growth. M. 12-18" \$2.50; 18-24" \$3.50; 24-30" \$7.50; 30-36" \$10.00

**HELEN K**—Medium to large peony form, with unusual color toning of pale pink center to deeper lavender pink toward edges. Vigorous, compact growth. E-M. 12-18" \$6.00\*

**HISHI-KARAITO**—Small, bell-shaped, semi-double. Delicate pink. Slow, compact growth. M. 12-18" \$5.00\*

**IWANE (F. G. #2)**—Brilliant red, heavily blotched with white. Large semi-double. Slow, compact growth. M. 12-18" \$5.00\*; 18-24" \$6.50\*; 24-30" \$10.00\*

**JAMES ALLAN**—Fire-red. Very large, semi-double, medium growth. M. 12-18" \$4.00\*; 18-24" \$5.00\*

**JAMES ALLAN VAR.**—Fire-red, mottled with white. Medium growth. M. 12-18" \$4.00\*; 18-24" \$5.00\*

**J. C. WILLIAMS** (Hybrid Saluenensis x Japonica)—An outstanding new hybrid. Medium sized, light pink, profuse bloomer. Extremely long blooming season. Medium, bushy growth. M-L. 12-18" \$4.00; 18-24" \$5.00

**J. J. PRINGLE SMITH VAR.**—Dark red, heavily marbled with white. Very large, semi-double. Slow, compact growth. M-L. 12-18" \$2.50; 18-24" \$3.50; 24-30" \$7.50

**JESSIE KATZ** (U.S. Pat. No. 1107)—An outstanding new variety with large, wavy petals. Semi-double, watermelon pink. We are the exclusive West Coast propagators of this fine new camellia. Medium, bushy growth. M-L. 12-18" \$6.00\*; 18-24" \$7.50\*; 24-30" \$10.00\*; 30-36" \$12.50\*



C. JAPONICA ADOLPHE AUDUSSON VAR. See page 6



C. JAPONICA CINDERELLA, See page 2





SASANQUA CAMELLIAS LITTLE GEM,  
SHOWA-NO-SAKAE, SHISHI GASHIRA  
See page 20



C. JAPONICA DEBUTANTE  
See page 18



C. RETICULATA  
BUDDHA  
See page 2

Camellias offer  
the garden lover a  
wide range of color,  
type and flower form.



C. JAPONICA  
C. M. WILSON  
See page 6



C. JAPONICA  
CAROLYN TUTTLE, See page 6

**JOSEPH PFINGSTL** (Pat. No. 927)—A very large dark red, varying in form from semi-double to full formal. Extremely hardy and vigorous growth with long blooming season. October to April. E-L. 12-18" \$6.00\*

**JOSHUA A. YOUTZ** (White Daikagura)—This outstanding camellia was introduced by our nursery in 1950. Its blossoms, which are pure white, fully peony form double, are larger than its parent, the Daikagura. Its foliage, growing habit and early blooms are like its parent, making this variety a truly outstanding camellia. E-L. 12-18" \$2.50; 18-24" \$3.50; 24-30" \$7.50\*; 30-36" \$10.00\*

**KATHERINE NUCCIO** (N #104)—A 3 to 3½ inch double formal, rose form, consisting of 60-65 large petals. Brilliant rose-red, with edges of petals cupped inward. Foliage, dark green, medium, slightly twisted. Compact growth. 12-18" \$2.50; 18-24" \$3.50; 24-30" \$7.50; 30-36" \$10.00

**KERLEREC**—A very beautiful salmon-pink, medium-large peony to anemone form. Medium, bushy, upright growth. E-M. 12-18" \$6.00\*

**KING LEAR**—Cherry-red, marbled with white. Variegated form of Finlandia. Vigorous, compact growth. M. 12-18" \$2.50; 18-24" \$3.50; 24-30" \$7.50; 30-36" \$10.00

**LADY KAY**—Fimbriated peony form sport of Ville de Nantes, with growing and blooming season same as parent. Red, mottled white. 12-18" \$6.00\*; 18-24" \$7.50\*; 24-30" \$10.00\*

**LADY LUCILLE**—Very large, full double to peony. Creamy white. Medium, bushy upright. L. 12-18" \$2.50; 18-24" \$3.50; 24-30" \$7.50\*; 30-36" \$10.00\*

**LADY SADIE**—White. Large, semi-double with fluted petals that intermix with golden stamens. Medium, upright growth. M. 12-18" \$2.50; 18-24" \$3.50; 24-30" \$7.50

**LETITIA SCHRADER**—Dark, bright red. Very large peony form. Medium compact growth. M. 12-18" \$4.00\*; 18-24" \$5.00\*; 24-30" \$7.50\*

**LOUISE McCLAY VAR.**—Deep pink blotched with white. Medium, upright, compact growth. M. 12-18" \$4.00\*; 18-24" \$5.00\*

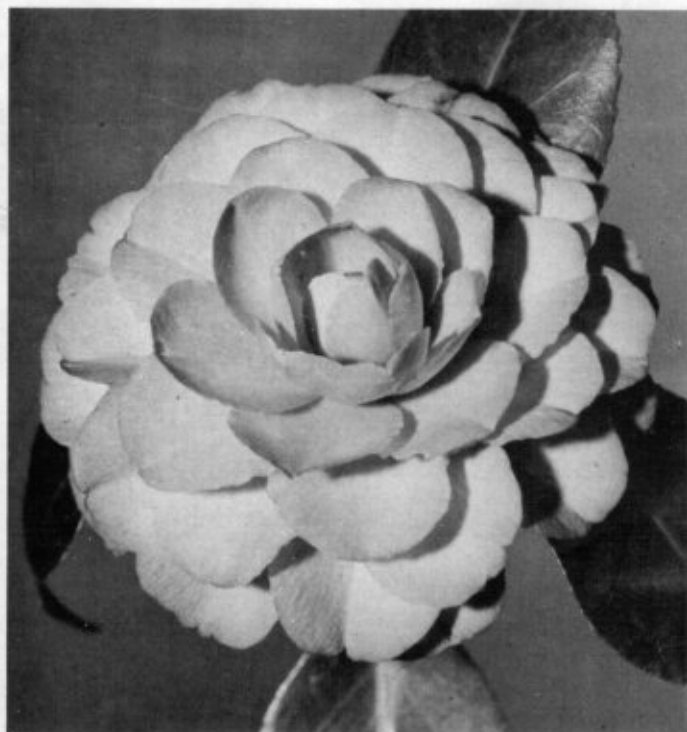
**MAGNOLIAFLORA**—Still one of the best of the pale pink semi-doubles. Its very compact, upright growth makes it a handsome shrub. M. 12-18" \$2.50; 18-24" \$3.50; 24-30" \$7.50; 30-36" \$10.00

**MARGARET RADCLIFF**—Medium to large, pale pink, semi-double to peony, shading to deeper pink on edges. M. 12-18" \$6.00

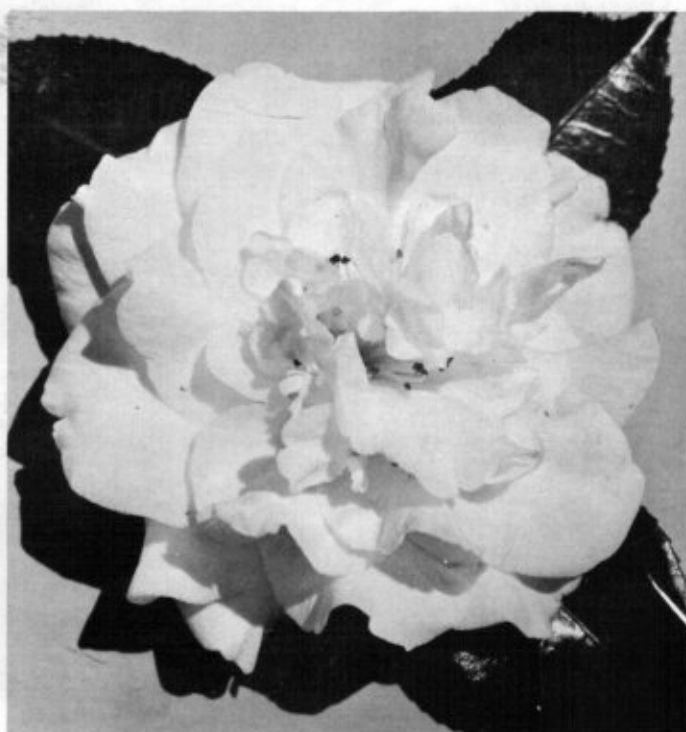
**MARGARET WALKER**—A beautiful variegated camellia. White, striped with pink. Large, semi-double to rose form double. Medium, upright growth. M-L. 12-18" \$4.00\*

**MARGUERITE TOURJE**—Excellent new sport of Masquerade, having the same growing habit and blooming season as its parent. Blossoms are large, semi-double to loose anemone form. Light fuchsia pink with petals bordered with white. M-L. 12-18" \$7.50\*

**MARIE GRIFFIN**—Beautiful blush pink sport of Finlandia. Much lighter than the Finlandia sport, Monte Carlo. Medium, bushy, compact. M. 12-18" \$6.00\*; 18-24" \$7.50\*



C. M. HOVEY, See page 18



JOSHUA A. YOUTZ

**MARJORIE MAGNIFICENT**—Pale pink, semi-double to peony form. Medium, compact growth. E-M. 12-18" \$2.50; 18-24" \$3.50

**MARY CHARLOTTE**—Pale pink. Medium to large anemone form. Vigorous, upright, compact. M. 12-18" \$2.50; 18-24" \$3.50

**MASQUERADE**—N #404)—Frank Williams Award Winner 1952. A very large semi-double to loose anemone form. White with an occasional fuchsia pink or rose pink marking. Foliage, long, dark green with habit of growth spreading yet very compact. M-L. 12-18" \$2.50; 18-24" \$3.50; 24-30" \$7.50\*

**MATHOTIANA SUPREME**—This sport of Mathotiana is the same color and has the same growing habits as its parent, but its large, semi-double blossoms has stamens interspersed among curled or ruffled center petals. 12-18" \$6.00\*; 18-24" \$7.50\*

**MATTIE O'REILLY**—Very large, semi-double to peony form with stamens intermixed with rabbit-eared petals. Beautiful shade of coral rose pink. Slow, compact, upright growth. E-M. 12-18" \$6.00\*; 18-24" \$7.50\*; 24-30" \$10.00\*

**MAX GOODLEY**—Very large, pale pink, irregular semi-double. Vigorous, open, upright growth. M-L. 12-18" \$5.00\*; 18-24" \$6.50\*

**MELODY LANE**—Very large semi-double. Blushed pink striped red. Medium compact growth. Profuse bloomer. M. 12-18" \$5.00\*; 18-24" \$7.50\*

**MOLLIE MOORE DAVIS**—A very beautiful, large, deep rose-pink sport of Big Beauty. Outstanding. Vigorous, bushy growth. M-L. 12-18" \$2.50; 18-24" \$3.50; 24-30" \$7.50\*; 30-36" \$10.00\*

**MONTE CARLO**—Beautiful light pink sport of Finlandia. Outstanding. M. 12-18" \$6.00\*; 18-24" \$7.50\*

**MRS. BERTHA HARMS**—A very large semi-double. Ivory white with blush pink cast. Medium, upright, open growth. M-L. 12-18" \$5.00\*

**MRS. CLARK**—A very beautiful light pink to white, large peony. Medium, compact growth. M. 12-18" \$5.00\*; 18-24" \$7.50\*

**MRS. FREEMAN WEISS**—Pink, occasionally mottled with white. Large, semi-double with wavy petals. Vigorous, upright, compact. M. 12-18" \$2.50; 18-24" \$3.50; 24-30" \$7.50

**MRS. NELLIE EASTMAN**—Flesh pink, speckled and striped with deep rose. Medium large, full peony form. Very beautiful. Medium, upright, compact. M. 12-18" \$5.00\*

**MY DARLING**—Beautiful, small soft pink. Single. Resembles a poppy. Vigorous, upright, compact. M. 12-18" \$2.50; 18-24" \$3.50; 24-30" \$6.50

**NINA AVERY**—New. Pale pink. Medium to large; semi-double to peony form. Vigorous, upright, compact. M. 12-18" \$6.00\*; 18-24" \$7.50\*

**ONJI**—Deep pink marbled with white. Very large semi-double. Variegated form of Lady Clare. Vigorous, bushy growth. E-M. 12-18" \$4.00\*; 18-24" \$5.00\*; 24-30" \$7.50\*

**PAULETTE GODDARD**—Red. Very large, semi-double to loose peony form. Vigorous, upright, open growth. M-L. 12-18" \$4.00\*; 18-24" \$5.00\*; 24-30" \$7.50



EMPEROR OF RUSSIA, See page 18



GEN. GEORGE PATTON, See page 18



C. JAPONICA  
REG RAGLAND  
See page 14

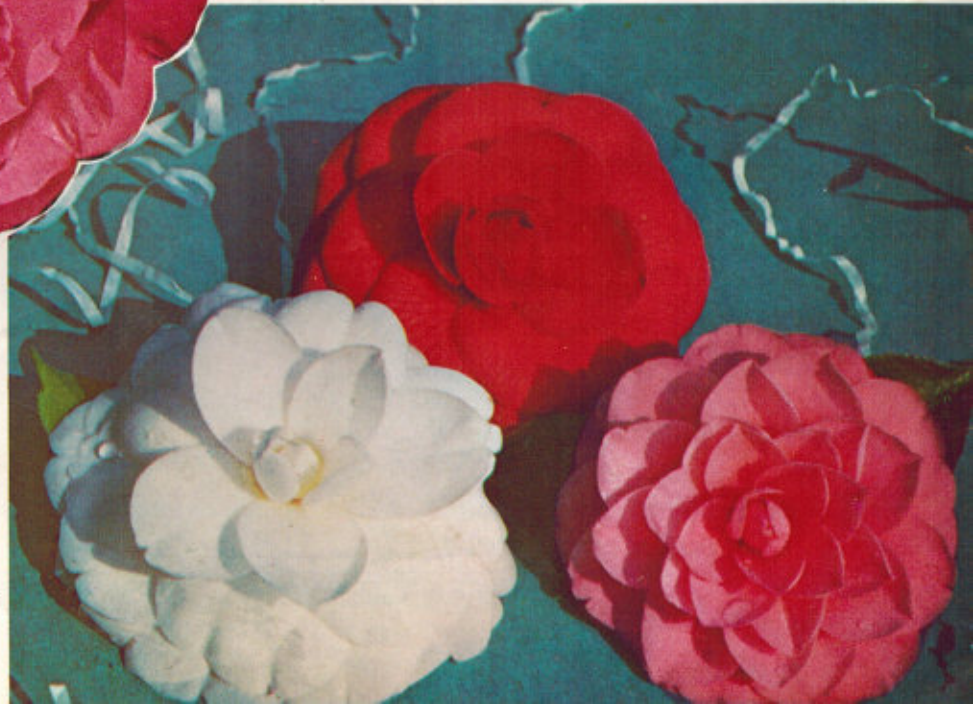


C. HIEMALIS  
SHOWA SUPREME  
See page 2



C. JAPONICA  
KRAMER'S SUPREME  
See page 2

C. JAPONICA  
POPE PIUS IX  
ALBA PLENA                      MRS. TINGLEY  
See page 18



## NEW CAM

Not only do we maintain a steady seedling p  
the introduction of such varieties as Katherine  
Margarete Tourje, Guilio Nuccio, Showa-Supr  
Robinson and Tinker Bell, but we also carry on  
other growers. Out of the hundreds we have  
very recent, we are adding 32 varieties to our  
assures you of the opportunity to acquire the n



C. JAPONICA MATHOTIANA  
See page 18



C. JAPONICA LADY KAY  
See page 10

## CAMELLIAS

program of our own, which has resulted in Nuccio, Primavera, Warrior, Masquerade, Me, May Ingram, Conquistador, Virginia. A very extensive trail of new varieties from given critical examination, both new and catalog this year. This constant program newest and best camellias at Nuccio's.



C. JAPONICA FINLANDIA VAR.  
See page 18



SASANQUA CAMELLIAS  
SETSUGEKKA  
YAE ARARE      NODAMI USHIRO  
See pages 19 and 20



THOMAS D. PITTS

**PEARL MAXWELL**—A beautiful, large formal double. Soft pink. A glorified Pink Perfection. Vigorous, compact growth. M-L. 12-18" \$2.50; 18-24" \$3.50; 24-30" \$7.50

**PINK CHAMPAGNE**—A large, light pink, full peony. Vigorous, upright. M-L. 12-18" \$6.00\*

**PINK DUCHESS OF SUTHERLAND**—Clear pink sport of Duchess of Sutherland. Upright, spreading growth. M. 12-18" \$4.00\*; 18-24" \$5.00\*; 24-30" \$7.50\*

**PINK SHADOWS**—A beautiful, large, semi-double with fimbriated petals. Deep salmon pink with shadows of deeper pink. Medium, upright, compact. E-M. 12-18" \$5.00\*; 24-30" \$7.50\*; 30-36" \$10.00\*

**PRIDE OF DESCANSO**—White. Very large, semi-double to loose peony form. Vigorous, loose, spreading growth. M-L. 12-18" \$4.00\*; 18-24" \$5.00\*; 24-30" \$7.50\*

**PRINCE FREDERICK WILLIAM**—Large, light pink, formal double of outstanding beauty. Australian import. Upright, bushy. M-L. 12-18" \$6.00\*; 18-24" \$7.50\*; 24-30" \$10.00\*

**PRIMAVERA (N #105)**—A 3½-4 inch full double formal, with a high center, consisting of 55-60 petals. Pure white. Some blossoms show a small petaloid center when fully opened. L. 12-18" \$2.50; 18-24" \$3.50

**PRINCE OF ORANGE (Crusader)**—Deep red. Very large semi-peony form to rose form double. Vigorous, compact growth. M. 12-18" \$2.50; 18-24" \$3.50; 24-30" \$7.50

**PRINCESS LAVENDER**—Unusual shade of lavender pink. Large, semi-double. Medium, upright growth. E-M. 12-18" \$6.00\*; 18-24" \$7.50\*

**REG RAGLAND** (Margaret Hertrich Award 1954 and John Illge Award Winner 1956)—A very large red to red and white full semi-double with smaller upright center petals. Vigorous, compact, upright growth. M-L. 12-18" \$7.50\*

**RISING SUN**—Vivid crimson with red stamens tipped with yellow anthers. Medium-large, single. Medium, bushy, upright. M. 12-18" \$4.00; 18-24" \$5.00\*

**R. L. WHEELER** (U.S. Pat. No. 1137)—A great new camellia that has won more awards than any other. A very large, semi-double to full peony; rose-red with extremely large foliage. (Propagating rights obtained from Central Georgia Nurseries.) E-M. 12-18" \$6.00\*; 18-24" \$7.50\*

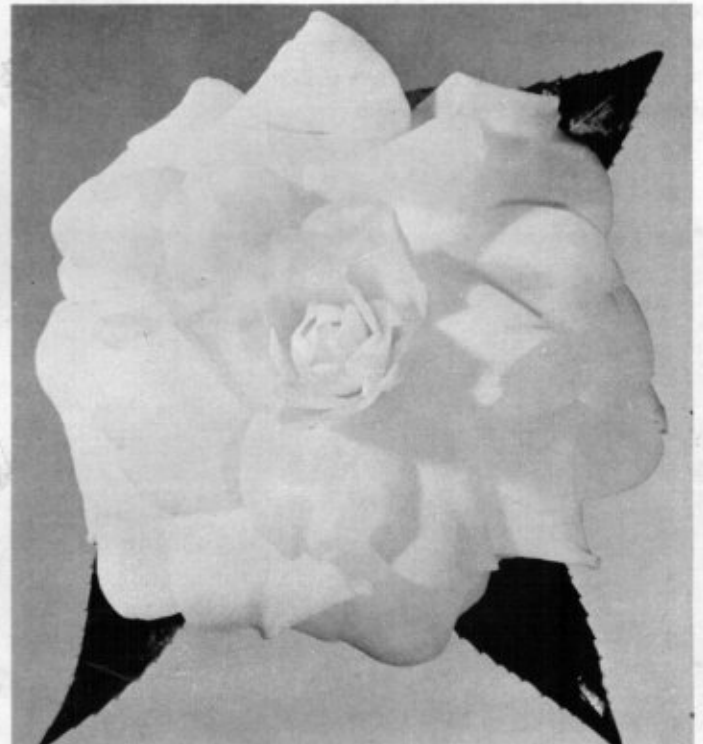
**ROOSEVELT BLUES**—Purplish-red. Large, semi-double to peony form. Vigorous, loose, upright. M. 12-18" \$4.00\*

**ROOSEVELT BLUES VAR.**—Purplish-red blotched with white. Vigorous, loose-upright. M. 12-18" \$4.00\*

**ROSEA SUPERBA VAR.**—Very large, rose form double. Rose-pink, marbled white. Vigorous, bushy, compact growth. M-L. 12-18" \$4.00\*; 18-24" \$5.00\*

**ROSEMARY KINZER**—Light pink. Large semi-double to irregular double. M. 12-18" \$5.00\*; 18-24" \$6.50\*

**RUTH ROYER**—Pink, heavily marked white sport of Duchess of Sutherland. Vigorous, upright, spreading growth. M. 12-18" \$6.00\*



PAX, See page 18

**SHIN AKEBONO**—Pale pink. Large, single to semi-double. Medium, loose, spreading growth. E-M. 12-18" \$4.00\*; 18-24" \$5.00\*; 24-30" \$7.50\*; 30-36" \$10.00\*

**SHIRO CHAN**—This beautiful white sport of C. M. Wilson shows an occasional blush pink at the base of the petaloids. Same habit of growth and blooming season as its parent. 12-18" \$5.00\*; 18-24" \$6.00; 24-30" \$7.50\*; 30-36" \$10.00\*

**S. PETER NYCE**—A beautiful predominantly white sport of Nagasaki. Winner of Best Flower Award in Southern California Camellia Society Show 1952. Slow, spreading, bushy growth. M. 12-18" \$5.00; 18-24" \$7.50\*

**SPRING SONNET**—New. Outstanding pale pink sport of Herme. Growth and blooming season same as parent. 12-18" \$5.00\*; 18-24" \$7.50; 24-30" \$10.00\*

**TALLAHASSEE GIRL**—Large, semi-double to loose peony form. Very soft pink. Vigorous, upright growth. E-M. 12-18" \$4.00\*; 18-24" \$5.00\*

**TE DEUM** (Dr. Shepherd)—Dark red. Very large, from semi-double to full peony to formal double. Medium, open growth. M-L. 12-18" \$4.00\*; 18-24" \$5.00\*; 24-30" \$7.50\*

**THELMA DALE**—Silvery-pink. Large, semi-double to rose form double. (Sport of Mrs. Baldwin Wood.) M. 12-18" \$2.50; 18-24" \$3.50; 24-30" \$7.50\*; 30-36" \$10.00\*

**THOMAS D. PITTS** (N #144)—A new white formal double that we are proud to offer. This camellia, along with its full white blossoms, has beautiful, deep green foliage, and vigorous, bushy, upright growth. Blooms heavily from midseason to late. 12-18" \$2.50; 18-24" \$3.50; 24-30" \$7.50



VILLE DE NANTES VAR.

**TINSIE**—Bright red outer guard petals with white peony center. Vigorous, open, upright growth. M. 12-18" \$4.00\*; 18-24" \$5.00\*

**TOKI-NO-HAGASANE** (Bessie Morse Bellingrath)—White with faint blush of pink. Large, semi-double. Extremely slow, compact growth. L. 12-18" \$2.50; 18-24" \$3.50

**VILLE DE NANTES VAR**—Dark red, blotched with white. Large, irregular semi-double with edges of petals fimbriated. Slow, bushy growth. M. 12-18" \$4.00\* 18-24" \$5.00; 24-30" \$7.50; 30-36" \$10.00

**WARRIOR** (N #107)—A 4-4½ inch semi-double to full peony form, brilliant, dark red with golden stamens. Foliage light green, medium size. An upright grower. E-M. 12-18" \$4.00; 18-24" \$5.00

**WHITE EMPRESS**—White. Very large, irregular semi-double. Vigorous, upright growth. E-M. 12-18" \$2.50; 18-24" \$3.50; 24-30" \$7.50\*; 30-36" \$10.00\*

**WHITE GIANT**—White. Very large, semi-double. Vigorous, compact, upright growth. M. 12-18" \$4.00\*; 18-24" \$5.00\*

**WILDWOOD**—Very large, light orchid pink, semi-double to peony form with heavy veining. Upright, compact growth. M-L. 12-18" \$6.00\*

**YOHEI HAKU**—White to creamy white, often tinted blush pink. Large, spreading growth. E-L. 12-18" \$2.50; 18-24" \$3.50

**YVONNE TYSON**—A new large, salmon pink, large anemone form. Medium, compact growth. M-L. 12-18" \$6.00\*; 18-24" \$7.50\*



SHIRO CHAN



MARGARET SHORT



SNOW PALACE

**FIRST RELEASE**

**MARGARET SHORT**—Large 5-5½" semi-peony of unusual shade of lavender pink at edge of petals with coral tint toward center of flower. Mass of interesting light colored stamens surrounded by rabbit ear petals. Compact grower. M. 12-18" \$10.00\*; 24-30 \$20.00\*

**SNOW PALACE** (Elegans Seedling)—A 4½-5½" semi-peony in pure white, showing a few golden stamens among many short petaloids. Handsome rolled guard petals of velvety texture. Rich, dark green foliage. E-M. 12-18" \$10.00\*; 24-30" \$20.00\*



FROSTY MORN



GUEST OF HONOR



# HARVEY SHORT'S "CAMELLIAS OF TOMORROW"

Mr. Harvey Short, who is well known throughout the camellia world for his fine seedlings and introductions, has turned over his camellia shipping orders to us. We are extremely happy to be able to offer to our customers this fine list of his new varieties of well grown stock.

**ANITA'S TRIUMPH**—Large, high built peony form. Unusual oriental red with deep blood red streaks. Compact grower. Handsome foliage. M-L. 12-18" \$4.00\*

**BREAK O'DAY**—Large, high built form to anemone form. Light coral pink. Vigorous, open, upright growth. E-L. 12-18" \$3.50

**BRIDE'S BOUQUET**—A very large white semi-double with fluted and notched petals. Medium, open growth. Long blooming season. M-L. 12-18" \$4.00\*; 18-24" \$5.00\*; 24-30" \$7.50\*; 30-36" \$10.00\*

**DEEPRIFT**—Pure white. Large to very large semi-double with evenly notched petals. Lotus seedling. Medium, bushy, upright growth. M. 12-18" \$5.00\*

**DEEP SOUTH**—Large, semi-double, dark rose-red. Compact growth and heavy bloomer. M-L. 12-18" \$4.00\*; 24-30" \$8.50\*

**FASHION NOTE**—Blush pink. Large, semi-double with some rabbit ears. Medium, upright growth. M. 12-18" \$4.00\*

**FIRE FALLS**—Glowing crimson. Large, irregular double to peony form. Excellent texture. Vigorous, handsome foliage. E-M. 12-18" \$4.00\*

**FROSTY MORN**—A very large white anemone to peony form with beautiful long, narrow, slightly twisted foliage. Medium, open, upright growth. M-L. 12-18" \$5.00\*; 24-30" \$10.00\*; 30-36" \$12.50\*

**GALLANT ARRAY**—Beautiful rich red, semi-peony form to full double. Mrs. Chas. Cobb seedling (better color). Excellent. 12-18" \$5.00\*

**GRAND FINALE**—White. Very large irregular semi-double with fan shaped, fluted petals and unusual mass stamen formation. Beautiful foliage. Medium compact growth. M. 12-18" \$7.50\*

**GUEST OF HONOR**—(Margaret Hertrich Award 1955.) Large, semi-double to peony. Salmon-rose. Vigorous, compact, upright grower. M. 12-18" \$7.50\*

**LEADING LADY**—Salmon-rose. Large semi-double with elongated petals. Flame seedling. Compact growth. 12-18" \$5.00\*

**MASTERPIECE**—Its 4½ to 5 inch, pure white, rose form blossoms are deep petaled, cup shaped and 3 inches deep. Foliage unusually large with open, vigorous growth, makes this camellia a very handsome shrub as well as a beautiful flower. E-M. 12-18" \$3.00; 18-24" \$4.00

**PINK CLOUDS**—Cream pink, marked deeper pink, changing to light lavender pink as flower ages. Very large anemone form. Vigorous, bushy growth. M. 12-18" \$6.00\*; 18-24" \$7.50\*

**PINK ICE**—Soft lavender pink. Medium to large single. Upright, vigorous. Unusual. M. 12-18" \$5.00\*

**RED RHYTHM**—Rich red formal of unusual keeping qualities. Medium size flower. Vigorous open growth. Prof. Sargent seedling. 12-18" \$3.50



PINK CLOUDS

**SCENTED TREASURE**—A 3 to 4 inch full double, peony form. Deep cherry-red blossoms that have the spicy fragrance of English Pinks. Profuse and extremely early season of bloom. Medium, upright, compact. E-M. 12-18" \$4.00; 18-24" \$5.00\*

**SEVENTH HEAVEN**—Light rose-pink. Large, full semi-double with wide petals and small petaloids in center. Vigorous, open, upright growth. M. 12-18" \$5.00\*; 18-24" \$7.50; 24-30" \$10.00\*

**SPECIAL TRIBUTE**—Medium to large formal Elegans seedling. Soft pink toned light pink. M. 12-18" \$4.00\*

**SPRING TRIUMPH**—Large, full peony form, coral red. Profuse bloomer. Medium, open growth. M-L. 12-18" \$5.00\*; 18-24" \$7.50\*; 24-30" \$10.00\*

**SUNSET GLORY**—Large, coral red anemone form. Excellent texture. Vigorous open growth. M. 12-18" \$5.00\*; 18-24" \$7.50\*; 24-30" \$10.00\*

**SUN UP**—Coral pink. Large to very large, perfect peony form. Petals notched and generally unusual. Compact, upright growth. E-L. 12-18" \$4.00\*

**THE PILGRIM**—Cream white, large peony form. Upright growth. M. Lotus seedling. 12-18" \$5.00\*

# GREAT FAVORITES OF YESTERDAY AND TOMORROW

Even though we and other camellia growers throughout the world are constantly testing and developing new and finer varieties, the following camellias in Group 1 and Group 2 continue through the years to compete and remain popular because of their unsurpassed beauty and quality.

## GROUP I

12"-18" \$2.00; 18"-24" \$3.00; 24"-30" \$5.50; 30"-36" \$6.50

**ANITA**—Light pink, striped carmine. Medium to large, semi-double. Tall, compact growth. 12"-18", 24"-30"

**ARAJISHI** (Aloha)—Salmon-red to deep crimson-red. Very early bloomer. Large peony form. Vigorous, upright, open growth. E. 12"-18" only.

**BELLA ROMANA**—Light pink, striped crimson. Medium-large, double. Medium, bushy growth. M. 12"-18", 24-30" only.

**BLOOD OF CHINA**—Deep salmon-red. Large, semi-double to loose peony form. Vigorous, upright, compact. L.

**CHANDLERI ELEGANS PINK** (Francine)—Rose-pink. Large anemone form. Medium, spreading growth. E-M.

**CHANDLERI ELEGANS VAR.**—Rose-pink mottled with white. Large anemone form. Medium, spreading growth. E-M.

**C. M. HOVEY** (Col. Firey)—Brilliant, deep red. Large, full double, imbricated. Medium, loose, upright growth. L.

**COVINA**—Rose-red. Medium, semi-double. Excellent landscape variety. Medium, bushy growth. M. 12"-18", 18"-24", 24"-30" only.

**DAIKAGURA RED**—Bright rose-pink. Large peony form. Slow, compact growth. E-L.

**DAIKAGURA VAR.**—Bright rose-pink, splotted with white. Large, loose peony form. Slow, compact growth. E-L.

**DEBUTANTE**—Soft pink. Large, full peony form. Vigorous, loose, upright growth. E-M.

**ELENA NOBLE**—Bright flame-red. Medium, formal double, showing stamens when fully opened. Medium, upright, compact growth. L. 12"-18" only.

**EMPEROR OF RUSSIA**—Scarlet. Large, double to peony form. Slow, compact growth. M. 12"-18"; 18"-24" only.

**EMPEROR OF RUSSIA VAR.**—Variegated form of Emperor of Russia. Scarlet, spotted with white. Slow, compact growth. M. 12"-18" only.

**FINLANDIA**—White. Large, semi-double with fluted petals. Medium, bushy, compact. M.

**FINLANDIA VAR.** White, streaked and speckled red form of Finlandia. Medium, bushy, compact. M.

**HERME** (Jordan's Pride)—Pink with white border, streaked rose-pink. Large, semi-double. Vigorous, open, upright. M.

**HIGH HAT**—Pale pink sport of Daikagura. Slow, compact growth. E-L.

**IMPERATOR**—Light red. Large, full, peony form. Vigorous, bushy growth. E. 12"-18" only.

**KUMASAKA**—Rose-pink. Large, full double. Upright and compact growth. M-L.

**LADY CLARE**—Rose-pink. Very large semi-double. Prominent golden stamens. Vigorous, bushy growth. E-M.

**LALLAROOK** (Laurel Leaf)—Pink, marbled with white. Large, full double imbricated. Medium, upright, compact. M-L.

**MATHOTIANA** (Julia Drayton)—Crimson-red. Very large, full double imbricated, showing stamens when fully opened. Vigorous, bushy growth. M-L.

**MEREDITH LAKE**—Pale lavender-pink. Medium, semi-double. Vigorous, bushy growth. M.

**MME. HOVEY**—Pink, fading to lighter pink at center. Medium to large, formal double. Medium, upright, compact. M. 12"-18" only.

**MRS. MARIE KEATING**—Light pink. Medium large, semi-double to peony form. Vigorous, compact, upright. M. 12"-18" only.

**MRS. TINGLEY**—Light silvery-pink. Medium to large, formal double imbricated. Medium, compact. M-L.

**NAGASAKI**—Rose-pink marbled with white. Very large, semi-double. Medium, spreading growth. M. 12"-18", 18"-24" only.

**PAX**—White. Large, flat formal double. Medium, upright, compact. M-L.

**PINK BALL**—Soft pink. Medium large, full peony form. Vigorous, compact, upright. M.

**PINK PERFECTION**—Shell pink. Medium, formal double. Medium, bushy, upright. E-L.

**PINK STAR**—Rose-pink. Large, irregular semi-double. Slow, compact, upright. M. 12"-18" only.

**POPE PIUS IX**—Rich orange-red. Large formal double imbricated. Medium, compact, upright. M.

**PRINCESS BACIOCCHI**—Deep rose-red. Large semi-double to semi-peony form. Vigorous, bushy growth. M.

**PROF. C. S. SARGENT**—Dark red. Medium, full peony form. Vigorous, bushy, upright. M.

**PURITY**—White. Medium, formal double showing stamens when fully opened. Vigorous, upright. L.

**ROSEA SUPERBA**—Rose-pink. Very large, rose form double. Vigorous, compact growth. M-L.

## GROUP II

12"-18" \$2.50; 18"-24" \$3.50; 24"-30" \$6.00; 30"-36" \$7.50

**ADOLPHE AUDUSSON**—Large semi-double, deep red. Upright, compact growth. M.

**ALBA PLENA**—Large white, formal double. Medium, bushy growth. E-M.

**CALIFORNIA**—Very large rose-red semi-double. Medium, upright, compact. M.

**DONCKELARI** (Southern)—Very large semi-double red sometimes marbled white. Slow, bushy growth. M. 12"-18" only.

**DUNCAN BELL**—Brilliant red. Very large anemone form. Vigorous, upright, open growth. M. 12"-18" only.

**ELEANOR OF FAIROAKS**—Ruby-red, marbled with white. Large, semi-double to peony form. Variegated Vedrine. Vigorous, upright, spreading growth. E-M. 12"-18" only.

**FIMBRIATA**—Resembles Alba Plena with the exception of the petals which are beautifully fringed. Medium, bushy growth. E-M.

**FLAME**—Flame-red. Very large semi-double. Large petals. Medium, upright growth. M.

**FRED SANDER**—Crimson-red. Medium, semi-double, with wavy petals intermixed with petals. Vigorous, upright, compact growth. M-L.

**FRIZZLE WHITE**—White. Very large, semi-double with wavy petals intermixed with stamens. Vigorous, bushy growth. M.

**GEN. DWIGHT EISENHOWER**—Deep red, large peony to anemone form. Vigorous, upright, compact growth. M-L. 12"-18" only.

**GEN. GEORGE PATTON**—Bright pink. Large, formal double showing stamens. Vigorous, upright, open growth. M-L.

**GIGANTEA** (Emperor Wilhelm)—Brilliant red, marbled with white. Very large semi-double to peony form. Vigorous, upright, open growth. M.

**GOSHOGURUMA**—Deep orange-red occasionally spotted with white. Large semi-double to peony form. Medium, upright, compact. M. 12"-18", 18"-24" only.

**GOV. EARL WARREN**—Deep, rich pink. Very large, semi-double. Vigorous, bushy, spreading growth. M.

**LOTUS**—White. Very large semi-double. Prominent stamens. Vigorous, upright, open growth. M. 12"-18", 18"-24", 24"-30" only.

**MARGARET HIGDON**—Large, semi-double, rose-red. Vigorous, upright, compact. M. 12"-18" only.

**MARGARETE HERTTRICH**—White. Medium large, formal double. Vigorous, compact, upright. M.

**MARION MITCHELL**—Beautiful, large, semi-double, scarlet-red with occasional petaloids intermixed with stamens. Medium, compact, upright growth. M. 12"-18", 18"-24", 24"-30" only.

**MARTHA BRICE**—Light pink. Large, semi-double to loose peony form. Medium, bushy, spreading. M.

**MME. HAHN**—Bright salmon pink. Large, semi-double to peony form. Vigorous, upright growth. M.

**MT. SHASTA**—White. Large, full peony form. Upright, compact growth. M-L. 12"-18" only.

**MRS. CHARLES COBB**—Dark coppery red. Large, semi-double to loose peony form. Vigorous, upright. E-M.

**ROSEA PLENA**—Rose pink with dark veins. Large, rose form double. Vigorous, compact, upright. E-M.

**SEN. DUNCAN U. FLETCHER**—Rose-red. Large semi-double to peony form. Medium, upright, compact. M-L. 12"-18" and 18"-24" only.

**SWEETI VERA**—Flesh pink, mottled white with deeper pink speckles. Large, peony form. Vigorous, spreading growth. M. 12"-18" only.

**VEDRINE** (Ruby Glow)—Ruby-red. Large, semi-double to peony form. Vigorous, upright. E-M. 12"-18" only.

# SASANQUA CAMELLIAS

In the past few years the Sasanqua has at last been gaining the added popularity it rightfully deserves. Its hardiness, early and profusion of bloom (September to January), small, dark evergreen foliage make it a valuable addition to our landscape. Sasanquas thrive in full sun or a partially shaded area and may be used as hedges, ground covers, vines or specimens. Care and culture of the Sasanqua is identical to that of the Japonica.

**APPLE BLOSSOM**—White blushed pink. Single. Vigorous spreading growth. 12-18" \$2.50; 18-24" \$3.50; 24-30" \$6.50; 30-36" \$7.50

**AUSTRALIAN HIRYU**—This fine variety, imported from Australia by William E. Wylam, is a large, brilliant rose-red, semi-double, with excellent texture and substance. Upright, compact growth. 12-18" \$4.00\*; 18-24" \$5.00\*; 24-30" \$7.50

**BETTY PATRICIA**—New. Very large rose form double. Rose-pink. Vigorous, compact, upright. 12-18" \$5.00\*

**BRIAR ROSE**—Soft clear pink. Single. Vigorous, open, upright growth. 12-18" \$2.50; 18-24" \$3.50; 24-30" \$6.50; 30-36" \$7.50

**BROOKSIE ANDERSON**—New. Small double light orchid pink. Profuse bloomer. Extremely bushy growth with small dark green foliage. 12-18" \$4.00

**CHARMER**—New. Single white, edge salmon pink. Large. Upright open growth. 12-18" \$4.00; 18-24" \$5.00

**CHOJI-GURUMA**—Full anemone form, rose-pink with lighter pink petaloids. Upright growth. 12-18" \$2.50; 18-24" \$3.50; 24-30" \$6.50; 30-36" \$7.50

**CLEOPATRA**—Rose-pink. Semi-double to peony type. Very compact. 12-18" \$2.50; 18-24" \$3.50; 24-30" \$6.50

**COTTON CANDY**—New. Large semi-double, with ruffled petals. Clear light pink. 12-18" \$5.00\*

**DAWN**—Beautiful single to semi-double, ivory white with blush pink at the margins of petals. Upright and compact growth. 12-18" \$2.50; 18-24" \$3.50; 24-30" \$6.50

**FLORIBUNDA**—Single white, edged lavender pink. Vigorous, upright and compact. 12-18" \$2.50; 18-24" \$3.50

**FUKUZUTSUMI**—Large, irregular semi-double white, shaded rose. Unusually fragrant. Vigorous, upright growth. Australian import by William E. Wylam. 12-18" \$4.00\*

**GIN-NO-SAE**—Small, creamy white, full anemone form. Spreading growth. 12-18" \$2.50; 18-24" \$3.50

**HANA JIMAN**—Large single white, tipped with pink. Fluted petals. Vigorous, upright and compact. 12-18" \$2.50; 18-24" \$3.50; 24-30" \$6.50; 30-36" \$7.50

**HINODEGUMA**—Large, single white with pink edge. Vigorous, upright, bushy growth. 12-18" \$2.50; 18-24" \$3.50; 24-30" \$6.50; 30-36" \$7.50

**HINODE-NO-UMI**—New. Very beautiful. Large, flat single. Deep crimson. Profuse bloomer. Upright, compact. 12-18" \$2.50; 18-24" \$3.50; 24-30" \$6.50

**HIODOSHI**—Single crimson, beautifully marbled white. Compact, slow grower. 12-18" \$2.50; 18-24" \$3.50

**HIRYU**—Deep crimson-red. Double. Vigorous, upright compact growth. 12-18" \$2.50; 18-24" \$3.50

**HIRYU-NISHIKI**—Variegated red and white form of Hiryu. 12-18" \$4.00\*; 18-24" \$5.00\*

**HUGH EVANS**—Profuse bloomer. Single pink. Vigorous, upright and compact. 12-18" \$2.50; 18-24" \$3.50; 24-30" \$6.50; 30-36" \$7.50

**JEAN MAY**—This outstanding new Sasanqua will soon become the favorite of all because of its glossy foliage and compact, upright habit of growth. Large, shell pink, double blossoms. Excellent. 12-18" \$2.50; 18-24" \$3.50; 24-30" \$7.50; 30-36" \$10.00

**KO-GYOKU (Little Gem)**—Small, full formal double, white with edges of petals slightly marked with pink. Upright, compact. 12-18" \$2.50; 18-24" \$3.50; 24-30" \$7.50\*; 30-36" \$10.00\*

**LAVENDER QUEEN**—Large, single, lavender-pink. Vigorous, loose, spreading growth. 12-18" \$2.50; 18-24" \$3.50; 24-30" \$6.50; 30-36" \$7.50

**MOMOZONO NISHIKI**—Single, pale pink, shading to rose-red border. Vigorous, upright, bushy growth. 12-18" \$2.50; 18-24" \$3.50; 24-30" \$6.50; 30-36" \$7.50

**NARUMIGATA**—Single white, shaded with pink. Very large. Compact, vigorous, upright. 12-18" \$2.50; 18-24" \$3.50; 24-30" \$6.50; 30-36" \$7.50

**NODAMI USHIRO**—Large, deep pink, semi-double. Vigorous, compact growth. 12-18" \$2.50; 18-24" \$3.50; 24-30" \$6.50; 30-36" \$7.50

**OCEAN SPRINGS**—A large single white with petals edged with crimson. Very beautiful. Medium, bushy growth. 12-18" \$2.50; 18-24" \$3.50; 24-30" \$6.50; 30-36" \$7.50

**PAPAVER**—Large, single, bell shaped. Soft pink. Slender, upright growth. 12-18" \$2.50; 18-24" \$3.50; 24-30" \$7.50

**PINK SNOW**—A clear, light pink anemone with vigorous, low spreading growth. New. 12-18" \$2.50; 18-24" \$3.50

(Continued Next Page)

Several years ago 32 unlabeled varieties of Sasanqua Camellias were imported from Japan. The following three varieties were chosen and named by us from this group because of their outstanding beauty:

**NAVAJO (J#12)**—Large, heavy textured semi-double, brilliant rose-red fading to white in center. Bushy, compact, upright growth. 12-18" \$2.50; 18-24" \$3.50; 24-30" \$6.50; 30-36" \$7.50

**RAINBOW (J#8)**—Large single white with brilliant red border on each petal. Vigorous, bushy upright. 12-18" \$2.50; 18-24" \$3.50; 24-30" \$6.50; 30-36" \$7.50

**PALE MOONLIGHT (J#3)**—Pale, orchid-pink, rabbit eared, semi-double with excellent texture. Small foliage, low spreading growth. 12-18" \$3.00



C. SASANQUA, HANA JIMAN, See page 19



C. SASANQUA, HIRYU, See page 19

**SASANQUA CAMELLIAS—Continued**

**ROSY MIST**—Large, single, delicate soft pink. Spreading growth. 12-18" \$2.50

**SETSUGEKKA**—A large single to semi-double white with ruffled petals that are slightly marked with pink at edges. Vigorous, upright. 12-18" \$2.50; 18-24" \$3.50; 24-30" \$6.50; 30-36" \$7.50

**SHISHI GASHIRA**—Double, bright rose-red. Slow, low and compact. 12-18" \$2.50

**SHINNOME** (Shishifukujin)—Very large, clear, soft pink. Single to semi-double. Upright, bushy growth. 12-18" \$2.50; 18-24" \$3.50; 24-30" \$6.50; 30-36" \$7.50

**SHOWA-NO-SAKAE**—Semi-double to peony. Soft pink. Slow, low and compact. 12-18" \$2.50; 18-24" \$3.50; 24-30" \$6.50; 30-36" \$7.50

**SNOWFLAKE**—Beautiful, flat, large-petaled single white, with large, deep green foliage. Vigorous, upright, bushy. 12-18" \$2.50; 18-24" \$3.50; 24-30" \$6.50; 30-36" \$7.50

**SPLENDOR**—Soft pink with darker pink toward edge. Very large semi-double. Bushy spreading growth. 12-18" \$4.00\*

**TAIMI-NISHIKI**—Single, pale pink mottled white. Open, vigorous growth. 12-18" \$2.50; 18-24" \$3.50; 24-30" \$7.50\*

**TANYA**—Deep rose pink. Single. Excellent spreading bushy growth habit. 12-18" \$2.50

**WHITE DOVES** (Mine-no-Yuki)—White, semi-double to loose peony form. Vigorous, spreading grower. 12-18" \$2.50

**YAE ARARE**—Beautiful, large single white with petals tipped pink. Vigorous, bushy, upright growth. 12-18" \$2.50; 18-24" \$3.50; 24-30" \$6.50; 30-36" \$7.50



C. SASANQUA, JEAN MAY, See page 19





# RETICULATA CAMELLIAS

The following Yunnan Province Reticulata Camellias have caused great comment and interest wherever shown. Their beautiful blooms and open, graceful habit of growth make them distinct and unsurpassed in the world of camellias. All are still in very limited quantity.

**BUTTERFLY WINGS**—6 inch rose-pink blossoms, with large, wavy petals. Slender, open growth. M-L. 12-18" \$7.50\*; 18-24" \$10.00\*; 24-30" \$12.50\*; 30-36" \$15.00\*

**CAPT. RAWES**—Brilliant pink. Very large, wavy and fluted petals. Semi-double. L. 12-18" \$5.00\*; 18-24" \$7.50\*; 24-30" \$10.00\*

**CHANGS TEMPLE**—Extremely large, brilliant pink, variegated semi-double. Vigorous, compact growth. M-L. 12-18" \$7.50\* 18-24" \$10.00; 24-30" \$12.50\*; 30-36" \$15.00\*

**CHRYSANTHEMUM PETAL**—Full double, imbricated pink, about 4 inches in diameter, with each petal fluted. Slender, open growth. M. 12-18" \$7.50\*

**CONFUCIUS**—Large, high centered semi-double orchid-pink with intermingled petaloids and stamens in center. Vigorous, compact, upright growth. M. 12-18" \$7.50\*; 18-24" \$10.00\*; 24-30" \$12.50; 30-36" \$15.00

**CORNELIAN**—Very large, deep rose, heavily marbled with white, semi-double, with wavy petals, and small petaloids in center. Medium, bushy growth. M-L. 12-18" \$7.50; 18-24" \$10.00; 24-30" \$12.50

**CRIMSON ROBE**—Very large, semi-double, carmine red. Petals are crepe textured, wavy and crinkled. Large foliage. Vigorous, upright, bushy. M-L. 12-18" \$7.50\*; 18-24" \$10.00\*; 24-30" \$12.50\*; 30-36" \$15.00\*

**LION HEAD**—Very large, semi-double, deep red, with each petal heavily variegated white. Vigorous, compact growth. M-L. 12-18" \$7.50\*; 18-24" \$10.00\*; 24-30" \$12.50\*; 30-36" \$15.00.

**MOUTANCHA**—Bright pink, veined white. Large to very large, formal double with wavy, crinkled crepe-like petals. Medium, bushy growth. L. 12-18" \$10.00\*; 18-24" heavy \$20.00\*



CRIMSON ROBE

**NOBLE PEARL**—A 6-inch semi-double flower, with large, beautifully textured petals, deep red. Slow, compact growth. L. 12-18" \$10.00\*; 18-24" \$20.00\*

**OSMANTHUS LEAF**—Medium size, rose-form double of unusual orchid-pink color. Small foliage. Vigorous, slender, open growth. M-L. 12-18" \$7.50\*

**PAGODA**—Light red flowers, similar in form to Purple Gown, but more double, though small in diameter. Medium, compact growth. M-L. 12-18" \$7.50\*; 18-24" \$10.00\*; 24-30" \$12.50\*; 30-36" \$15.00\*

**PROFESSOR TSAI**—Large, rose-pink, semi-double with loose petal arrangement. Open, spreading growth. M-L. 12-18" \$7.50\*; 24-30" \$12.50\*; 30-36" \$15.00\*

**PURPLE GOWN**—A 5 to 7 inch formal to peony form, deep purple-red with white variegation. Beautiful. Slow, compact growth. M-L. 12-18" \$10.00\*; 24-30" \$20.00\*

**SHOT SILK**—Brilliant pink, semi-double flowers, with loose, wavy petals informally arranged. Vigorous, upright, compact growth. M-L. 12-18" \$7.50\*; 18-24" \$10.00\*; 24-30" \$12.50\*; 30-36" \$15.00\*; 5' heavy \$20.00\*

**TAKEIYEH (Large Osmanthus Leaf)**—Medium large, vivid orchid-pink, with wavy petaloids intermixed with stamens. Medium, compact growth. M-L. 12-18" \$7.50\*; 18-24" \$10.00\*; 24-30" \$12.50\*; 30-36" \$15.00\*

**TALI QUEEN**—Deep pink, lightly variegated with white; 6 inches or more in diameter. Large, heavily textured petals. Slow, compact growth. L. 12-18" \$10.00\*; 18-24" \$20.00\*

**WILLOW WAND**—Large, orchid-pink, formal double blossoms opening to semi-double, with wavy petals. Vigorous upright growth. M-L. 12-15" \$7.50\*; 18-24" \$10.00\*; 24-30" \$12.50\*; 30-36" \$15.00\*.



BUTTERFLY WINGS

# Muccio's Nurseries

3555 CHANEY TRAIL, ALTADENA, CALIFORNIA  
Telephone: SYcamore 4-3383

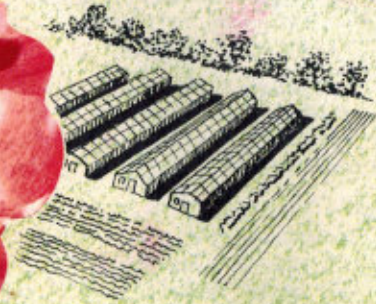
C. F. Urquhart  
Courtland  
Va



BLK. RT.

POSTMASTER: Form 3547 Requested.

CHANGS TEMPLE  
See page 23



## VISITORS WELCOME

We welcome our friends from all over the country and take pride in showing them our Nursery.

Business hours 8:00 to 5:00 daily except Wednesday. From May through Oct. 20 we are also closed on Sundays.



DR. TINSLEY  
See page 7

R. L. WHEELER  
See page 14

